



Founder Close, Coventry, CV4 8BS

**SHELDON
BOSLEY
KNIGHT**

LAND AND
PROPERTY
PROFESSIONALS

Property Description

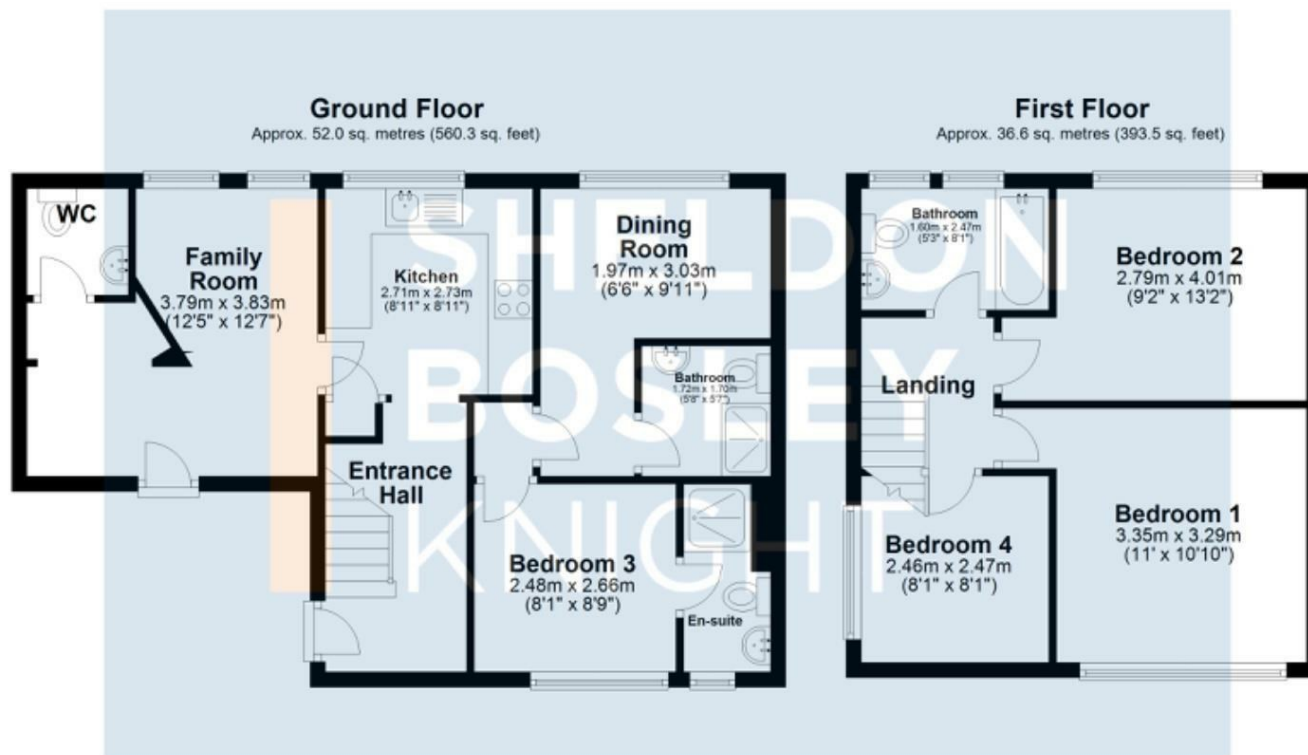
A fantastic investment opportunity with potential for further development, located close to the University of Warwick and offered with no onward chain.

The ground floor accommodation comprises an entrance hall with stairs rising to the first floor, a fitted kitchen, a communal room with access to the ground floor WC, and two double bedrooms with en-suites (one of which is currently set up as a dining room). To the first floor are two double bedrooms, a single bedroom and a family bathroom.

Externally, the property boasts a substantial sized rear garden being mostly laid to lawn.







Total area: approx. 88.6 sq. metres (953.7 sq. feet)

All efforts have been made to ensure that the measurements on this floorplan are accurate however these are for guidance purposes only.
Plan produced using PlanUp.

Key Features

- Investment Opportunity
- Potential For Further Development
- Close to University of Warwick
- Five Lettable Rooms
- Two En-Suites
- Family Bathroom & Separate WC
- Family Room
- Fitted Kitchen
- Substantial Rear Garden
- No Onward Chain

**Offers Over
£210,000**

EPC Rating - D

Tenure - Freehold

Council Tax Band - A

Local Authority -
Coventry City Council

We routinely refer clients to both our recommended Legal Firm and a panel of Financial Services Providers. It is your decision whether you choose to deal with these companies. In making that decision, you should know that we receive a referral fee